

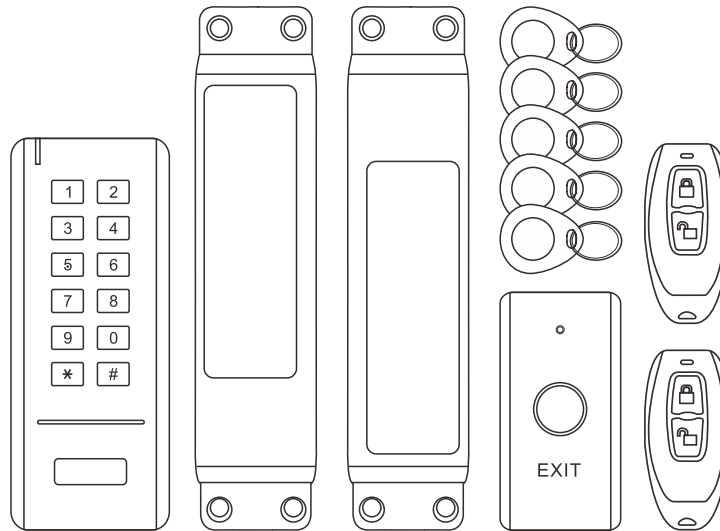


S4A Industrial Co., Limited



WS1

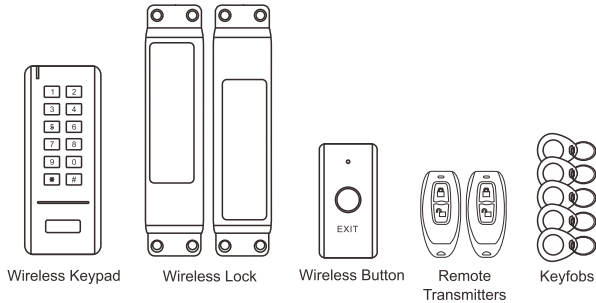
Wireless Access Kit



INTRODUCTION

WS1 is a set of complete wireless access kit for home/office use. It consists of a Wireless Keypad, a Wireless Bolt Lock (suitable for metal/wooden door and framed glass door), a Wireless Exit Button, 2 Remote Transmitters and 5 Keyfobs. Super strong 3M stickers provide simple installation way.

Major Parts



Battery type:

Wireless Keypad: 3 units of AAA batteries

Wireless Lock: 2 units of AA batteries

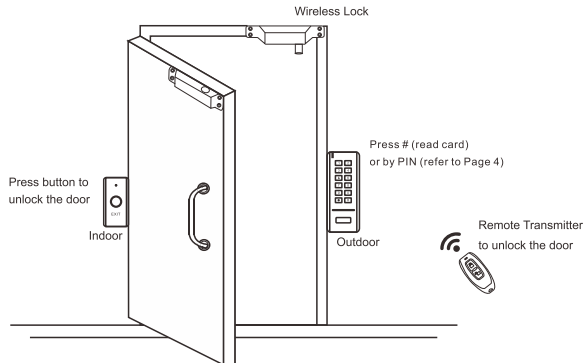
Wireless Exit Button: 1 unit of 2032 Lithium battery (Battery is already contained in the equipment)

Remote Transmitter: 1 unit of 2032 Lithium battery (Battery is already contained in the equipment)

Because of ultra low power consumption, the keypad, exit button and remote transmitters can work as long as one year (bases on 30 times/day); the open times of the lock is over 16,000 times (can work about one year bases on 40 times/day). It will remind people to replace batteries intelligently if low battery.

How to release the door ?

(All parts are paired already, and the keyfobs are added in the device. Users can operate it directly.)



3 versions for option:

WS1: including a wireless keypad, a wireless lock, a wireless button, 2 remote transmitters and 5 keyfobs

WS1-A: including a wireless keypad, a wireless lock, a wireless button and 5 keyfobs

WS1-B: including a wireless lock, a wireless button and 2 remote transmitters

Features:

- All wireless, no need wires any more
- Easy for installation and operation
- Open times: 16,000 times for lock, 10,000 times for keypad
- 433MHz Rolling Code technology
- Ultra low power consumption
- With two Remote Transmitters
- 100 PIN/card users
- 4-6 digits PIN, 125KHz EM card / 13.56MHz Mifare card (Optional)

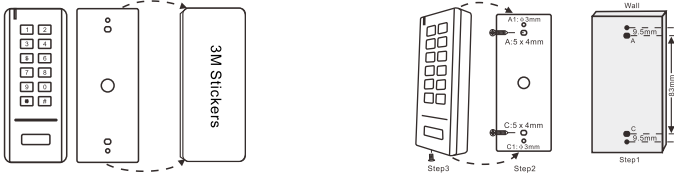
Specifications:

User Capacity PIN Length Card Type	100 (PIN/Card) 4-6 Digits 125KHz EM / 13.56MHz Mifare card (optional)
Operating Voltage Wireless Keypad Wireless Lock Wireless Exit Button Remote Transmitter	3 units of AAA batteries 2 units of AA batteries 1 unit of 2032 Lithium battery 1 unit of 2032 Lithium battery
Idle Current	All items ≤10uA
Working Current Wireless Keypad Wireless Lock Wireless Exit Button Remote Transmitter	≤50mA ≤42mA ≤3mA ≤3mA
Communication Frequency	433MHz
Communication Distance	30m Maximum
Environment Operating Temperature Operating Humidity	-20 °C~+60 °C(-4 °F~+140 °F) 0%~86%RH
Physical Wireless Lock Others	Zinc-Alloy ABS Shell
Dimensions Wireless Keypad Wireless Lock Wireless Exit Button Remote Transmitter	L135×W54×D19(mm) L169×W40×D25(mm) L83×W40×D16(mm) L62×W27×D11.5(mm)

Unit Weight	570g
Wireless Keypad	90g
Wireless Lock	400g
Wireless Exit Button	30g
Remote Transmitter	25g/pc

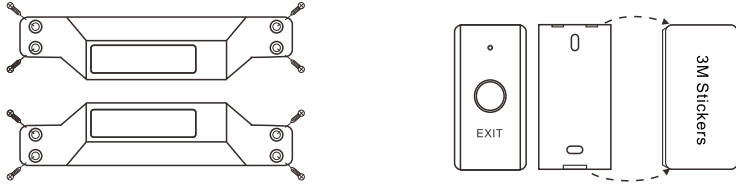
INSTALLATION

Wireless Keypad: Install by 3M stickers or screws



Wireless Lock: Install by screws

Wireless exit button: Install by 3M stickers



How to release the door ?

Programming Step	Keystroke Combination
PIN User Access	(PIN) #
Card User Access (Keyfobs in the package are added already)	# (Read Card)
By Remote Transmitter	Press
By Exit Button	Press the button

KEYPAD PROGRAMMING

Enter and Exit Program Mode

Programming Step	Keystroke Combination
1. Enter Program Mode	* (Master Code) # (Factory default is 123456)
2. Exit	*

Set Master Code

Please do remember your Master Code because the Master Code can't be reset if forget it.

Programming Step	Keystroke Combination
1. Enter Program Mode	* (Master Code) #
2. Update Master Code	0 (New Master Code) # (Repeat New Master Code) # Master code is any 6 digits
3. Exit	*

Add PIN Users

User ID: 1~100

PIN length: 4~6 digits

Programming Step	Keystroke Combination
1. Enter Program Mode	* (Master Code) #
2. Add PIN	1 (User ID) # (PIN) # User ID 6~100 (5 keyfobs already added with User ID 1~5)
3. Exit	*

Add Card Users (The 5 units keyfobs in the package are added already)

User ID: 1~100

Card type: 125 KHz EM Card / 13.56MHz Mifare Card (Optional)

Programming Step	Keystroke Combination
1. Enter Program Mode	* (Master Code) #
2. Add Card: Using Auto ID (Allows WS1 to assign Card to next available User ID number)	1 (Read Card) # The cards can be added continuously
OR	
2. Add Card: Select Specific ID (Allows Master to define a Specific User ID to associate the card)	1 (User ID) # (Read Card) # User ID 6~100 (5 keyfobs already added with User ID 1~5)
3. Exit	*

Delete Users

Programming Step	Keystroke Combination
1. Enter Program Mode	* (Master Code) #
2. Delete by User ID	2 (User ID) # The users can be deleted continuously.
OR	
2. Delete by Card	2 (Read Card) #
OR	
2. Delete all users	2 (Master Code) #
3. Exit	*


Set Access Mode

Programming Step	Keystroke Combination
1. Enter Program Mode	* (Master Code) #
2. PIN Access OR 2. Card Access OR 2. PIN or Card Access	3 0 # 3 1 # 3 2 # (factory default)
3. Exit	*

Set Buzzer

Programming Step	Keystroke Combination
1. Enter Program Mode	* (Master Code) #
2. Buzzer OFF OR 2. Buzzer ON	5 0 # 5 1 # (factory default)
3. Exit	*

Lock Immediately

The Wireless Lock will be locked automatically around 5 seconds after we open it. If we want to lock it faster, please press "0 #" on the Keypad, or press  on the Remote Transmitter, it will lock immediately.

Pair Wireless Keypad / Wireless Exit Button / Remote Transmitter with Wireless Lock
(They are already paired when out of factory, if no problem, the users do not need to do this operation in using.)

- Note:** 1. The Wireless Lock can pair 4 parts (Keypad or Remote Transmitter or Exit Button) maximum.
2. When pairing, all parts must be paired, then exit pairing mode. If need adding one more part, you still need to pair all parts again.

Step 1: Enter pairing mode

Open the battery cover of Wireless Lock, press the small round button on the PCB, hold it for 3 seconds, until hearing two beeps, that means in the pairing status.

Step 2: Pairing Wireless Keypad

Press the button "0 #" on the keypad, there will be one beep from Lock, that means pairing successfully.

Step 3: Pairing Wireless Exit Button

Press the exit button, until hearing one beep from Lock, that means pairing successfully.

Step 4: Pairing Remote Transmitter

Press any button on the Remote Transmitter, until hearing one beep from Lock, that means pairing successfully.

Step 5: Exit pairing mode

After pairing all parts, press the small round button in the Wireless Lock again, until hearing one beep, that means exit pairing successfully. Or it will exit pairing mode automatically 15 seconds later if there is no operation.

Sound and Light Indication

Device	Operation Status	Red LED	Green LED	Buzzer
Keypad	Standby	--	--	--
	Enter into Program mode	Shines per 1 second	--	One beep
	Unlock the lock	--	ON for 3 seconds	One beep
	Press key	--	--	One beep
	Wrong operation	--	--	Three beeps
	Invalid PIN/card	--	--	Three beeps
	Exit from the Program mode	--	ON for 1 second	One beep
	Low battery reminding	Orange LED ON		Three beeps when press any button
Lock	Pairing	ON	--	One long beep
	Unlock the lock	Shines 2 times	--	Two beeps
	lock	ON	--	One beep
	Low battery reminding	LED shining, and beeps (Note: The lock will open automatically when the battery is too low or run out, please change the battery IN TIME!)		
Remote Transmitter	Press Button	LED ON for 2 seconds		
	Low battery reminding	When the LED is dim, please change the battery		

Packing List

Name	Quantity
Packaging box	1pc
Wireless Keypad	1pc
Wireless Lock	1pc
Wireless Exit Button	1pc
Remote Transmitters	2pcs
Keyfobs	5pcs
Manual	1pc
Screw Driver	1pc
Wall Fixing Plus	2pcs
Self Tapping Screws	10pcs
3M Stickers	2pcs